



NORTHWINDS SUMMIT

5000 SUMMIT PLACE

Property Highlights



PROPERTY INFORMATION

- Office centric, master planned, mixed used development
- Signage opportunities
- Flexible parking ratio
- Designated, signalized entrance on Haynes Bridge Road
- GA-400 Southbound Exit 9 enters directly into development with secondary entrance along Northwinds Parkway
- Multiple restaurants and retail offerings to enhance employee experience
- Pocket parks and outdoor spaces for open air work environments
- Alpha Loop will connect the development with Downtown Alpharetta, Avalon, Big Creek Trail, and Path400
- High-Capacity Connectivity: Area's first 100% fiber-fed business park with pre-wired dark fibers to all tenants, offering virtually unlimited bandwidth on a private network as well as internet and network connectivity from 1 Gbps to 100 Gbps.

**OFFICE CENTRIC, MASTER PLANNED,
MIXED USED DEVELOPMENT**

Property Highlights



PHASE 1 OF NORTHWINDS SUMMIT

- 30,000 SF creative/loft style office building
- 150,000 SF Office Tower plus 5,000–10,000 SF of ground-floor retail
- 4,000 SF of Jewel Box Retail
- 140-Room Marriott AC
- 140-Home Multifamily Community, The Heights at Northwinds
- 7,000 SF of Retail and Restaurant Space on the Ground Floor of the Multifamily
- 18 Stacked Flat Condominiums

PHASE 2 OF NORTHWINDS SUMMIT

- 9,000–14,000 SF Retail
- 300,000 SF Office Tower
- 350,000 SF Office Tower
- 400,000 SF Office Tower
- For a total of 1.2 Million SF of office in the entire development

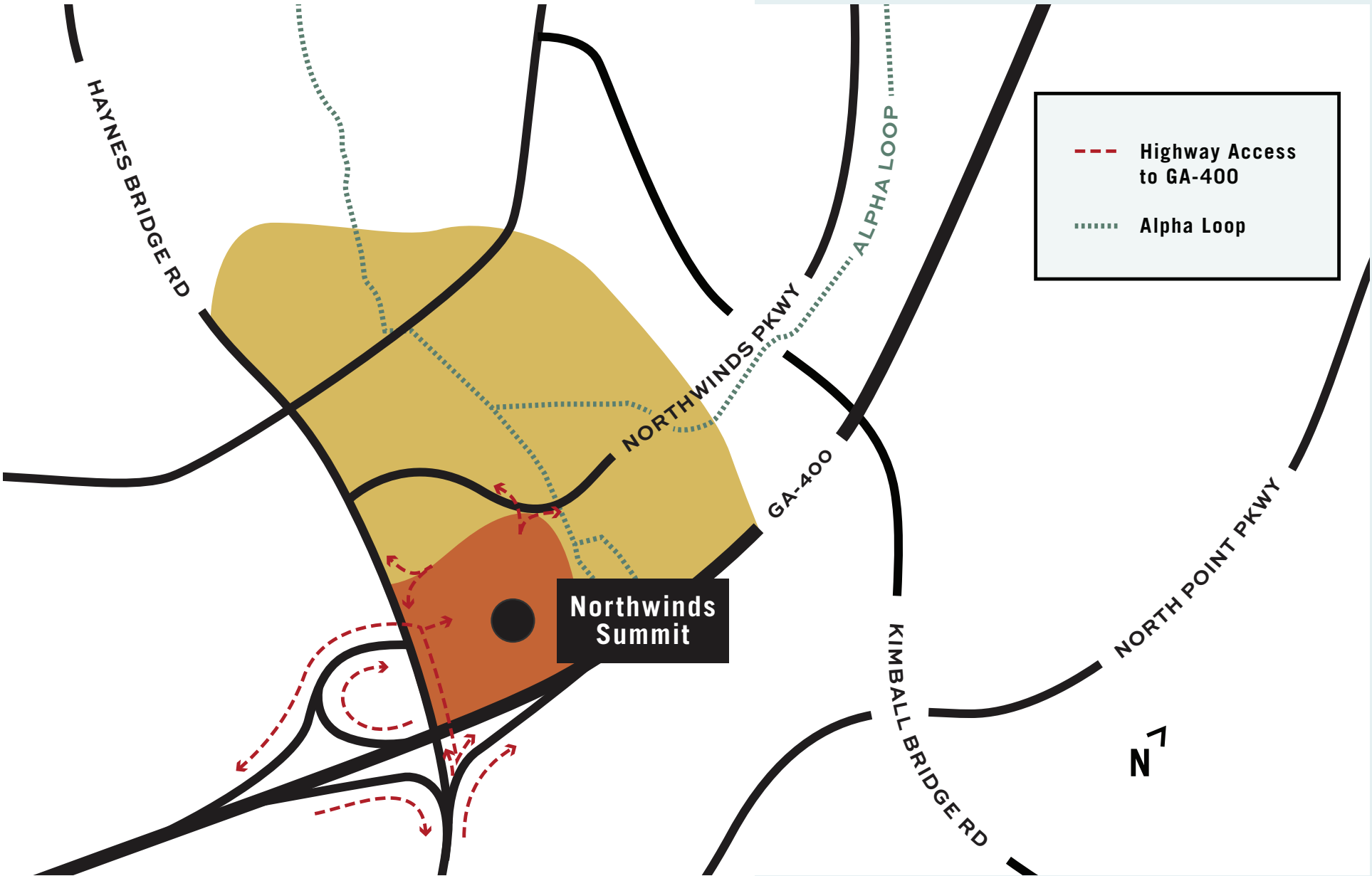
**1.2 MILLIONSF OF OFFICE,
30,000SF OF RETAIL**

Amenities Map

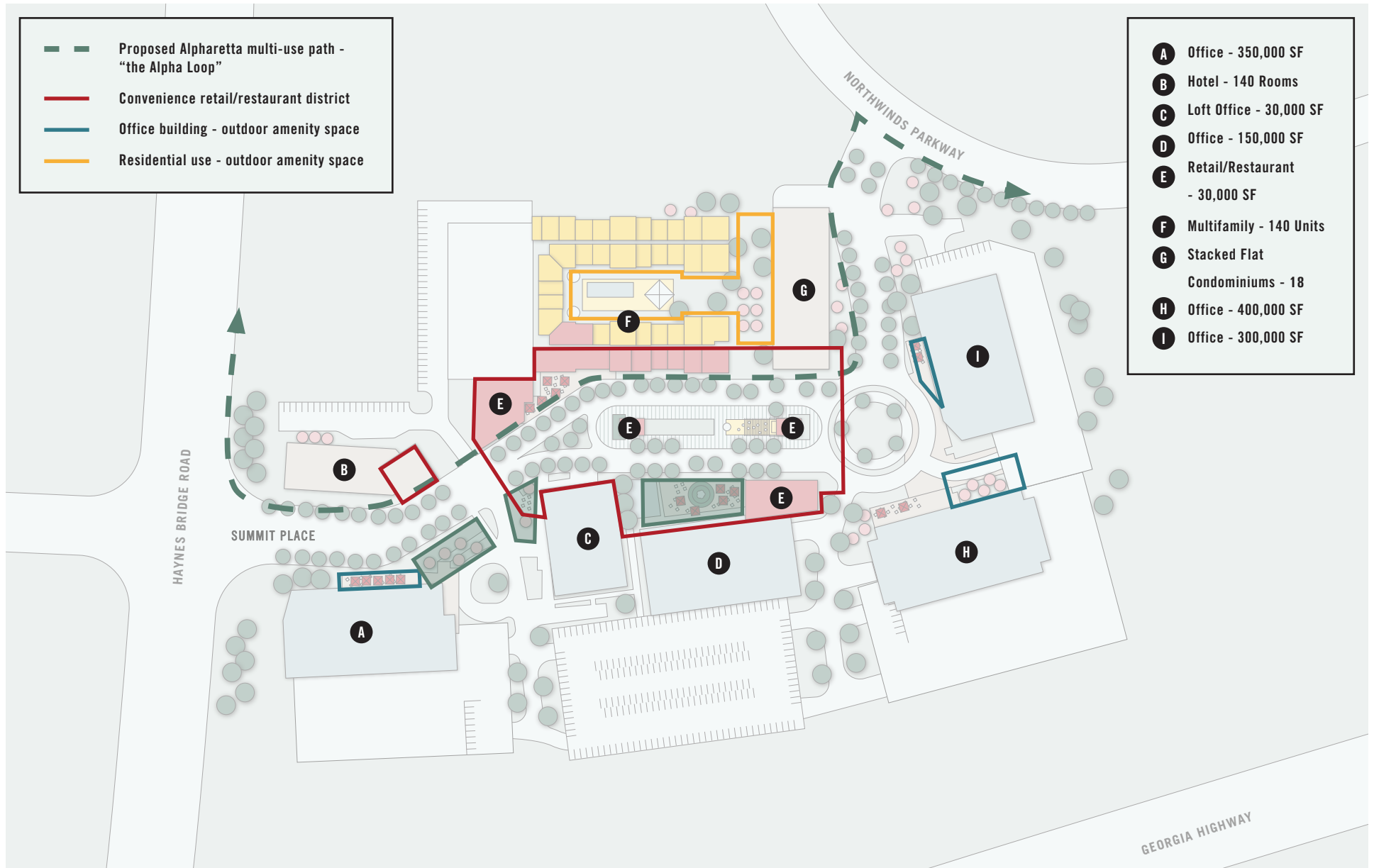
LESS THAN 1 MILE FROM DOWNTOWN
ALPHARETTA, AVALON, AND NORTH POINT MALL.



Access Map

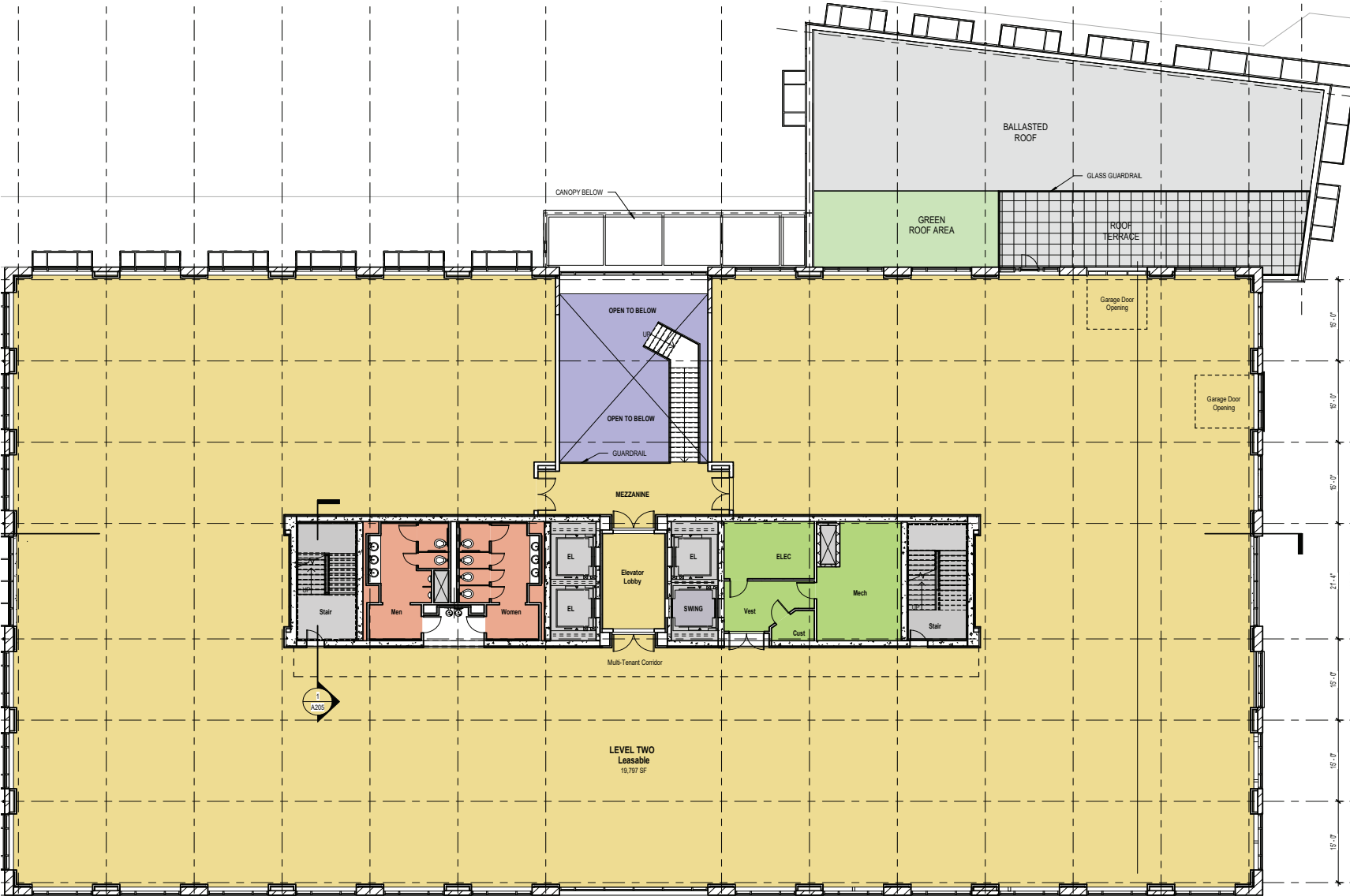


Site Plan



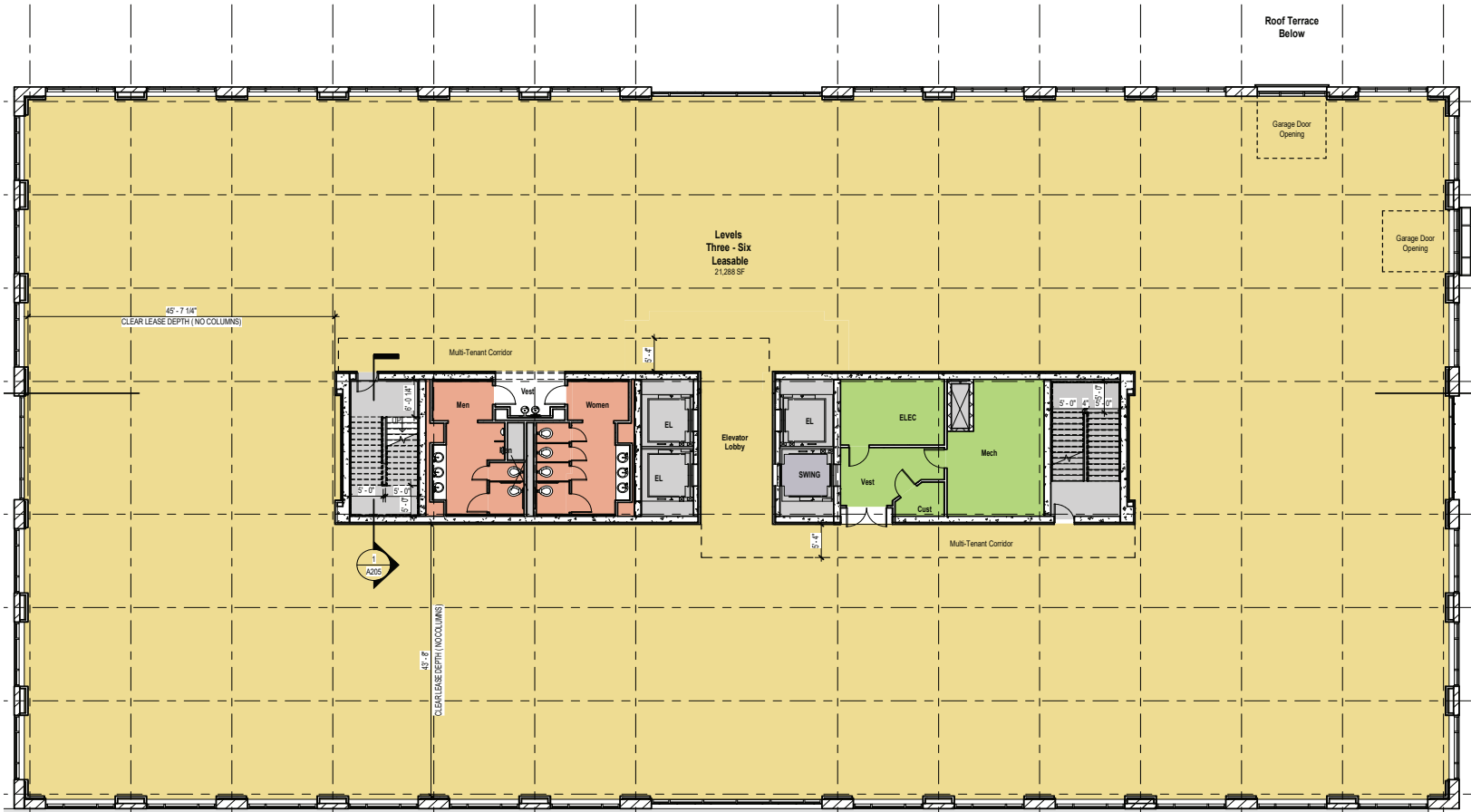
Floor Plan | 5000 Summit Place

SECOND FLOOR | 19,797 RSF



Floor Plan | 5000 Summit Place

THIRD-SIXTH FLOORS | 21,288 RSF





LEASING INFORMATION

Frances Land Klee | 404.694.9492 | fland@popeandland.com | popeandland.com
Kerry Armstrong | 770.980.0808 | karmstrong@popeandland.com | popeandland.com